

About this manual. This manual is designed to assist you in installing and using Bluetooth® touchpad. Information in this document has been carefully checked for accuracy; however, no guarantee is given to the correctness of the contents. The information in this document is subject to change without notice.

Edition

1st edition.

Copyright

© Copyright 2021

This document contains proprietary information protected by copyright. All rights reserved. No part of this manual may be reproduced by any mechanical, electronic or other means, in any form, without prior written permission of Capstone Industries, Inc.

Trademarks

All trademarks and registered trademarks are the property of their respective owners.

Federal Communications Commission Statement

You are cautioned that changes or modifications not expressly approved by the part responsible for compliance could void the user's authority to operate the equipment.

This equipment has been tested and found to comply with the limits for a Class B Digital Device, pursuant to Part 15 of the FCC Rules. These limits are designed to provide reasonable protection against harmful interference in a residential installation. This equipment generates, uses, and can radiate radio frequency energy and, if not installed and used in accordance with the instructions, may cause harmful interference to radio communications. However, there is no guarantee that interference will not occur in a particular installation. If this equipment does cause harmful interference to radio or television reception, which can be determined by turning the equipment off and on, the user is encouraged to try to correct the interference by one or more of the following measures: - Reorient or relocate the receiving antenna. - Increase the distance between the equipment and receiver. - Connect the equipment to an outlet on a circuit different from that to which the receiver is connected. - Consult the dealer or an experienced radio/

TV technician for help. This equipment complies with Part 15 of the FCC Rules.

Operation is subject to the following two conditions:

- 1) This device may not cause harmful interference.
- 2) This device must accept any interference received, including interference that may cause undesired operation.

Warning: Changes or modifications to this unit not expressly approved by the party responsible for compliance could void the user's authority to operate the equipment.

Thank you for purchasing the Thincast™ Bluetooth Remote Control and Touchpad. This User's Manual contains information that will help to operate the device as well as answering questions about certain special keys and buttons. Please keep this manual in a safe place for future reference.



THIN CAST™

Thincast™ Bluetooth
Remote Control
and Touchpad
User Manual



capstone
CONNECTED

For assistance with assembly or installation, parts and customer service, please do not return to retailer - contact Capstone CUSTOMER SERVICE at:

USA Toll Free: 1-888-570-8889

Hours of Operation: Monday - Friday 9AM - 5PM ET
431 Fairway Drive, suite 200, Deerfield Beach, FL 33441

mail: info@capstoneindustries.com

website: www.capstoneindustries.com

Made in China

Charging the Remote:

Charge the remote with the included USB-C cable. Plug cable into any standard USB-A power adapter or port. Once fully charged (approx. 2 hours), the red battery LED on the remote will shut off.

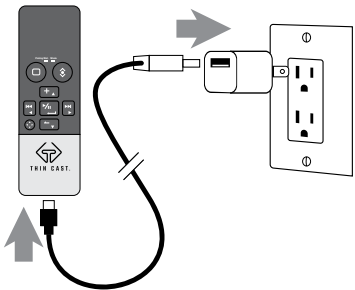
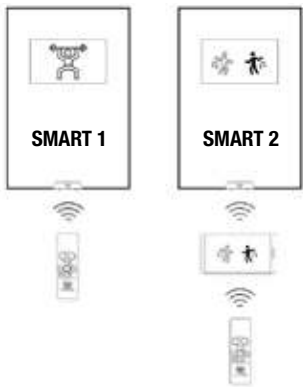
Disconnect the cable and slide the power switch under the remote to the green ON position.

Initiate Pairing:

Use paperclip to push in the pairing button and release.

Once the blue pairing LED flashes, continue to Smart 1 or Smart 2.

SMART 1: Pair the remote directly to the Smart Mirror for use in Smart 1: Open settings > Select connected devices > Pair new device > Select 'Bluetooth Remote Controller'



SMART 2: Pair the remote with your Smart Phone for use in Smart 2:

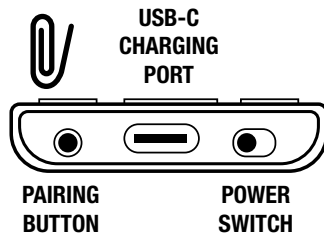
iPhone:

Open Settings > Accessibility > Touch > Assistive Touch > Toggle ON 'Assistive Touch' > Scroll down to Devices > Select Bluetooth devices > Select 'Bluetooth Remote Controller'

Android Phone:

Open Settings > Select Bluetooth connected devices > Pair new device > Select 'Bluetooth Remote Controller'

Remote Control Bottom View



TIPS:

- When switching between Smart 1 and Smart 2 remote will need to be paired.
- Remote will go into sleep mode after 5 minutes of nonuse. Tap any button to wake.
- Slide switch to off when remote won't be used for an extended period.
- The remote will rapidly flash blue when the battery is low.

For additional copies please scan QR code:



Remote Guidance:

- 1 Touchpad/Select:** Touch to move cursor around on the display. Tap or push in to select.
 - 2 Home Button:** Returns to home screen.
 - 3 Scroll Button:** Switches the touchpad to scrolling function (Blue LED). Use the touchpad to scroll up and down through webpages. Tap again to disable.
 - 4 Navigation Button:** Enables navigation keys (Red LED). Tap again to disable
- **Media Keys:**
+ - > || << >>
Press the +/- buttons for volume control. Use Play/Pause, Next/Previous track for media control.
 - **Navigation Keys:**
▲ ▼ ◀ ▶ ↵
Press the up, down, left, right and enter buttons to scroll and navigate through websites and pages.